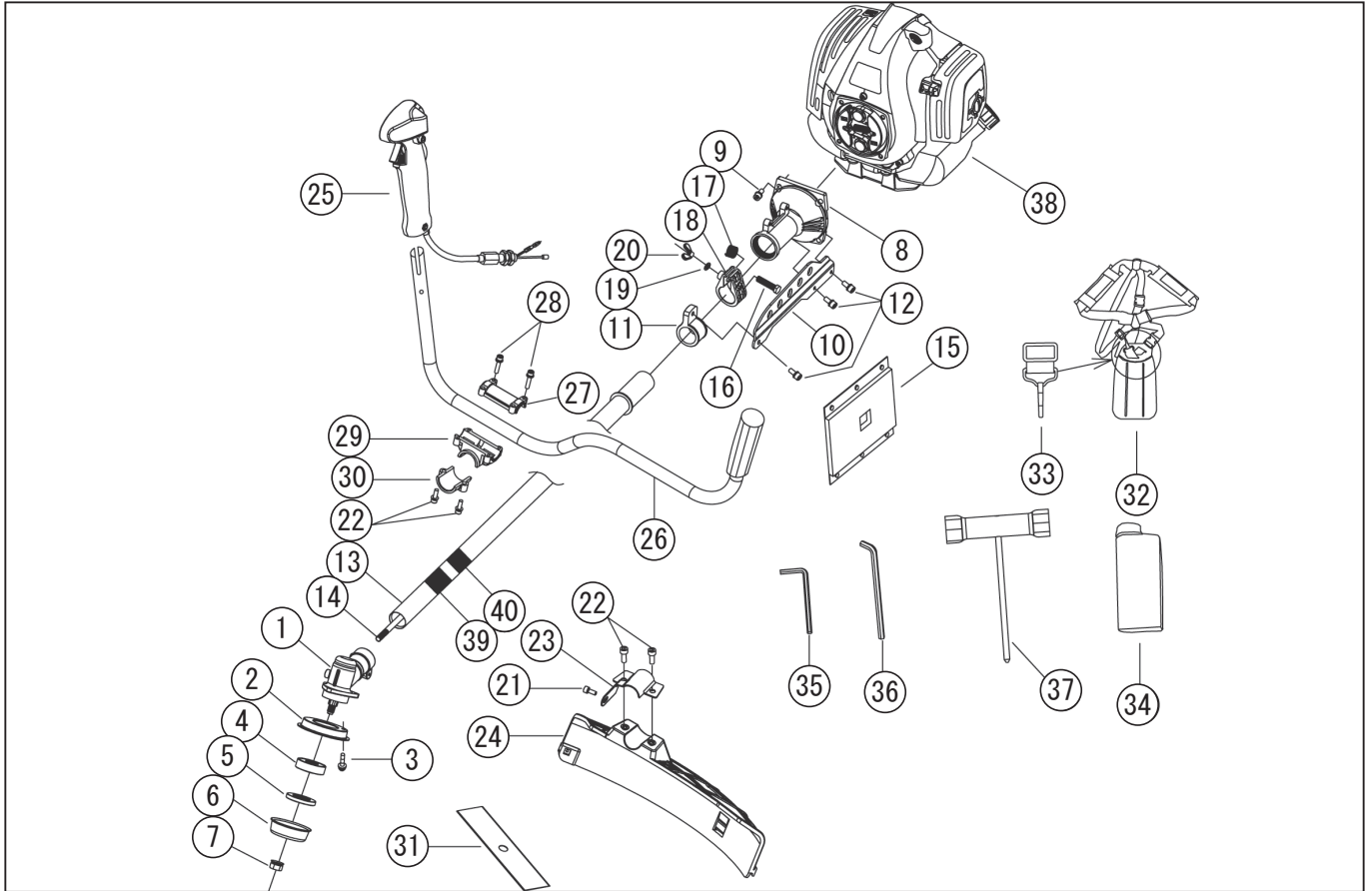


DWG No.076850601 MODEL:EBC-43U FORM:EBC-43U-BAA-0

No.	PARTS CODE	PARTS NAME	QTY	MATERIAL/SIZE	REMARKS
1	076802001	EBC-43U GEAR CASE ASSY	1		
2	076019001	EBC-43U ANTI-GLASS ENTANGLING METAL FITTING	1		
3	100207301	SCREW	3	M5X10	
4	076015101	EBC-43U SPLINE PAD A	1		
5	076015201	EBC-43U SPLINE PAD B	1		
6	076015301	EBC-43U NUT COVER	1		
7	076015401	EBC-43U NUT	1	M10	
8	076802101	CLUTCH ASSY	1		
9	076006101	EBC-26C SCREW	4	M6X20	
10	076015501	EBC-43U HANGING PLATE	1		
11	076015601	EBC-43U HANGING RING	1	PA6+GF30%	
12	076015701	SCREW	3	M6X16	
13	076802201	EBC-43U PIPE ASSY	1		
14	076017501	EBC-43U DRIVE SHAFT	1		
15	076015801	PIPE PAD	1		
16	076015901	SCREW	1	M6X45	
17	076016001	EBC-43U SPRING	1	φ9X17	
18	076016101	EBC-43U RING FOR LIMIT	1		
19	076016201	WASHER	1	φ12	
20	076016301	WING NUT	1	M6	
21	076006701	EBC-26C SCREW	1	M5X12	
22	076016401	SCREW	4	M6X5	
23	076016501	EBC-43U PROTECTOR PLATE	1		
24	076016601	EBC-43U PROTECTOR	1	PP	
25	076802301	EBC-43U LEVER ASSY	1		
26	076802401	EBC-43U HANDLE ASSY	1		
27	076016701	EBC-43U UPPER PRESS PLATE	1	ADC12	
28	100027701	BOLT	4	M5X25	
29	076016801	EBC-43U HANDLE HOLDER BLOCK	1	ADC12	
30	076016901	EBC-43U LOWER PRESS PLATE	1	ADC12	

◆ Bare engine can not be supplied



DWG No.076850601 MODEL:EBC-43U FORM:EBC-43U-BAA-0

No.	PARTS CODE	PARTS NAME	QTY	MATERIAL/SIZE	REMARKS
31	076017001	2T-BLADE	1	65MN/GB 1.6X305	
32	076017101	HARNESS ASSY	1		
33	076019101	EBC-43U HOOK	1		This part is included in No.32.
34	076017301	MIXTURE FUEL TANK	1	PE	
35	076008701	EBC-26C INTERNAL HEXAGOALWRENCH	1		
36	076017401	EBC-43U HEXAGOAL WRENCH	1	M6	
37	076013101	EBC-26C CROSS SOCKET WRENCH	1	17X19	
38	076017601	KC43-A0-B ENGINE	1		
39	076011401	EBC BRAND LABLE	1		
40	076018101	EBC-43U LABEL	1		
	076018001	EBC-43U CURTON BOX	1		
	076018301	EBC-43U OPERATION MANUAL(THAI)	1		

◆ Bare engine can not be supplied