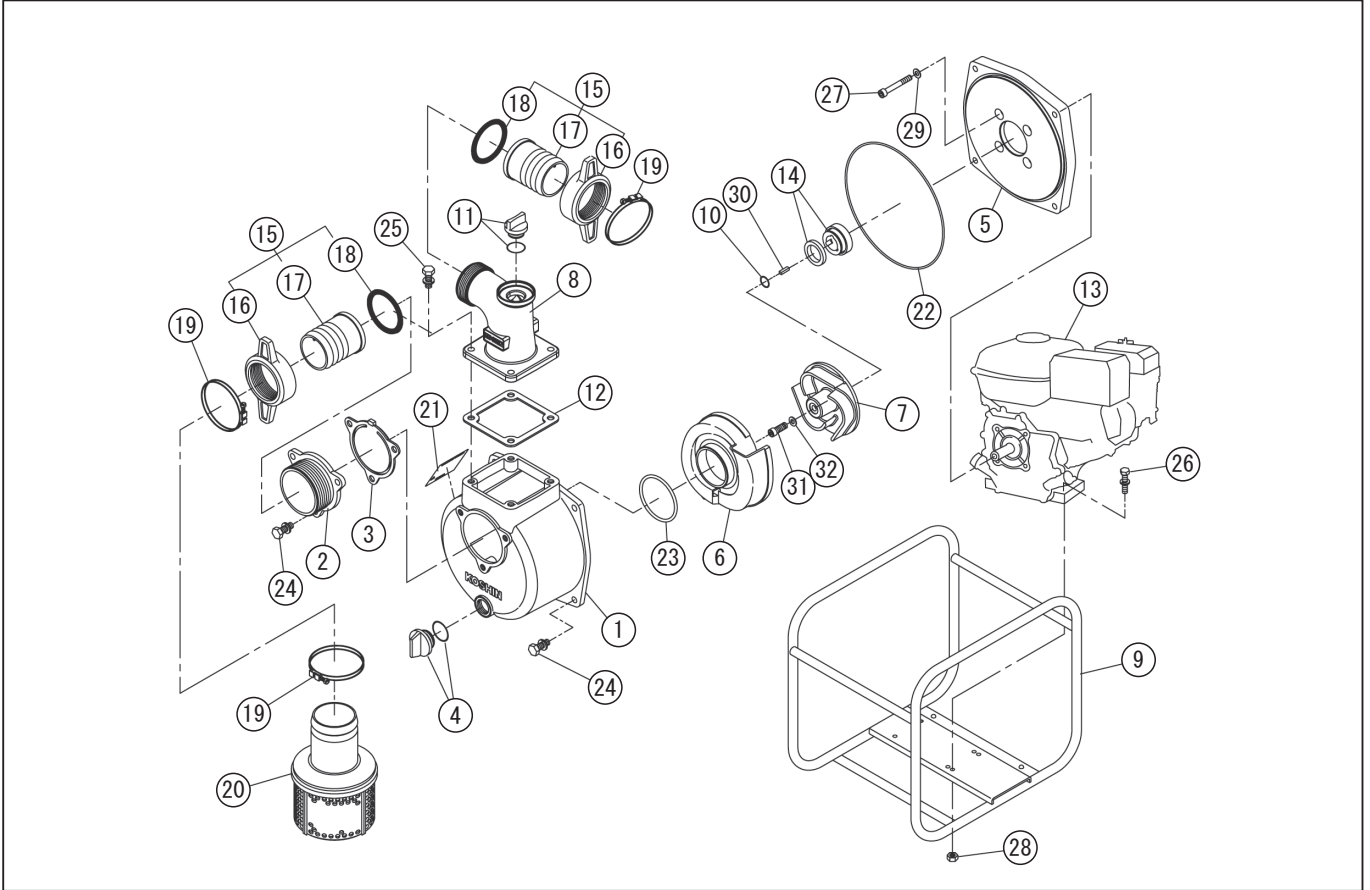


DWG No.066866601 MODEL : SEH-80LPG FORM : SEH-80LPG-BAA-0

No.	PARTS CODE	PARTS NAME	QTY	MATERIAL/SIZE	REMARKS
1	0121336	PUMP CASE	1	ADC	
2	0112797	SUCTION FLANGE	1	ADC	
3	0112799	CHECK VALVE	1	NBR	
4	0118078	20A PLUG SET	1		
5	0115269	FLANGE BRACKET	1	ADC	
6	0114379	VOLUTE CASING	1	FC	
7	0121212	IMPELLER	1	FC200	
8	0110570	DELIVERY FLANGE	1	ADC	
9	0127168	BASE SET	1	BLACK	
10	0114092	ADJUSTING WASHER	3	BSP T0.3	
11	0118079	25A PLUG SET	1		
12	0110584	FLANGE PACKING	1	CR	
13	-	GX200T2-QTG ENGINE	1	LPG KEY $\phi$ 19.05	
14	0114090	MECHANICAL SEAL	1	EH790-020	
15	0117028	COUPLING SET	2	ABS	
16	0114375	COUPLING	2	ABS	
17	0110301	NIPPLE	2	ABS	
18	0114378	COUPLING PACKING	2	NBR.HS65 $\pm$ 5	
19	940019090	HOSE BAND	3	$\phi$ 90	
20	0118195	STRAINER SET	1	PP	
21	0122702	NAME PLATE	1		
22	0115015	O-RING	1	1517-46.5 NBR	
23	0113989	O-RING	1	P74 NBR	
24	743119061	BOLT	7	M10 $\times$ 25 SWRM	
25	743119063	BOLT	4	M10 $\times$ 30 SWRM	
26	743119053	BOLT	4	M8 $\times$ 40 SWRM	
27	771932033	SOCKET BOLT	4	5/16-24UNF $\times$ 1"	
28	827419008	NUT	4	M8 SWRM	
29	854255008	SEAL WASHER	4	$\phi$ 8	
30	0121238	KEY	1	S45C 4.75*4.5*33.5	

◆ Bare engine can not be supplied



DWG No.066866601 MODEL : SEH-80LPG FORM : SEH-80LPG-BAA-0

No.	PARTS CODE	PARTS NAME	QTY	MATERIAL/SIZE	REMARKS
31	0121250	SOCKET BOLT	1	3/8-24 UNF*1" SCM	
32	854255010	SEAL WASHER	1	φ 10	
33	0122714	SIDE PANEL LABEL	1		

◆ Bare engine can not be supplied