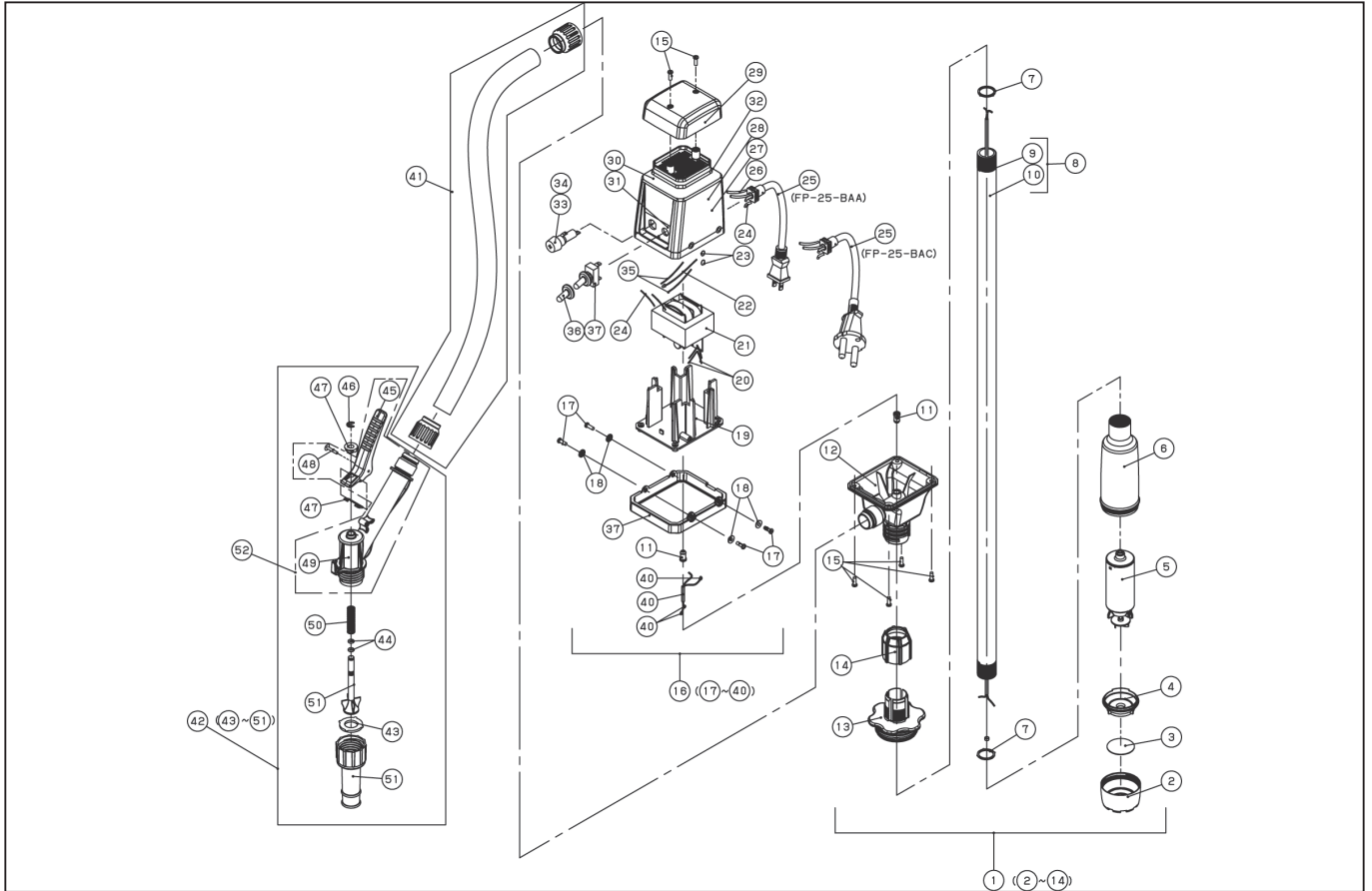


DWG No.004854719 / 004860901 MODEL:FP-25 FORM:FP-25-BAA-1 / FP-25-BAC-1(220V)

No.	PARTS CODE	PARTS NAME	QTY	MATERIAL/SIZE	REMARKS
1	0048051	PUMP ASSY	1		FOR FP-25-BAA No.2 ~ 14
	0048155	FP-25-BAC-1 PUMP ASSY	1		FOR FP-25-BAC No.2 ~ 14
2	0040283	STRAINER	1	POM	
3	0040328	FILTER	1	SUS304	
4	0040282	CASING	1	POM	
5	0048055	FP-25 MOTOR ASSY	1		FOR FP-25-BAA
	0048156	FP-25-BAC-1 MOTOR ASSY	1		FOR FP-25-BAC
6	0040281	PUMP CASE	1	POM	
7	0040316	SUCTION PIPE PACKING	2	NBR70°	
8	0048054	SUCTION PIPE ASSY	1		
9	0040280	SUCTION PIPE A	1	PE	
10	0040279	SUCTION PIPE B	1	SUS304 0.28 mm	
11	0220210	CORD GROMMET	2	NBR	
12	0040291	SP BODY	1	POM	
13	0040347	DRUM SCREW	1	POM	
14	0040348	DRUM NUT	1	POM	
15	718505035	TAPPING SCREW	6	4 × 1 2 SUS	
16	0048060	FP-25-BAA POWER UNIT ASSY	1		FOR FP-25-BAA No.17 ~ 40
	0048157	FP-25-BAC POWER UNIT ASSY	1		FOR FP-25-BAC No.17 ~ 40
17	718505037	TAPPING SCREW	4	4 × 1 6 SUS	
18	0040321	SPACER	4	POM	
19	0040294	POWER UNIT BASE	1	PA6	
20	0040326	TUBE(φ 2 × 32)	2	φ 2×32	
21	0048059	TRANSFORMER ASSY	1		
22	0520047	DIODE	1		
23	0220907	BAND(4 × 120)	2		
24	0040325	TUBE(φ 3 × 60)	2	φ 3×60	
25	0040289	POWER CORD	1	VCT 1×2C×4M	FOR FP-25-BAA
	0040589	FP-25-BAC-1 POWER CORD	1	KC 4.06M 1MM2	FOR FP-25-BAC
26	0040324	TUBE(φ 3 × 140)	1	φ 3×140	

◆ Bare engine can not be supplied



DWG No.004854719 / 004860901 MODEL:FP-25 FORM:FP-25-BAA-1 / FP-25-BAC-1(220V)

No.	PARTS CODE	PARTS NAME	QTY	MATERIAL/SIZE	REMARKS
27	0040351	CAUTION LABEL	1		
28	0040295	POWER UNIT COVER	1	PA6	
29	0040296	TOP COVER	1	PP	
30	0040344	FP-25 NAME LABEL	1		FOR FP-25-BAA
	0040587	FP-25-BAC-1 NAME LABEL (KOREA)	1		FOR FP-25-BAC
31	0040346	SWITCH LABEL	1		
32	0040590	FP-25-BAC LABEL	2		FOR FP-25-BAC
33	0048050	FUSE ASSY	1		
34	0040329	FUSE(4A)	1		
35	0040327	TUBE 2 × 50	2	φ 2 × 50	
36	0451420	SWITCH RUBBER	1		
37	0451405	TOGGLE SWITCH	1	15A 125VAC/10A 250VAC	
38	0040318	CUSHION RUBBER	1	NBR70° ± 5°	
39	0220607	INSULATED TERMINAL	3	EC-1-1	
40	0040323	DC CODE	1		
41	0048076	DELIVERY HOSE ASSY(1.5M)	1		
42	0048080	NOZZLE BODY ASSY	1		No.43 ~ 51
43	0040301	NOZZLE LEVER	1	POM	
44	888705005	STOP RING	1	5 SUS	
45	0040306	NOZZLE WEIGHT	1	POM	
46	853228137	RIVET 3 × 22	1	φ 3 × 22	
47	0040307	NOZZLE HOOK	1	SUS	
48	0040384	NOZZLE BODY	1	POM	
49	888985505	ORING	2	NBR	
50	0040303	NOZZLE VALVE	1	POM9	
51	0040299	NOZZLE END	1	POM	
52	0048085	NOZZLE BODY LEVER ASSY	1		No.45, 48, 49
53	0040342	MANUAL	1		FOR FP-25-BAA
	0040585	MANUAL	1		FOR FP-25-BAC

◆ Bare engine can not be supplied