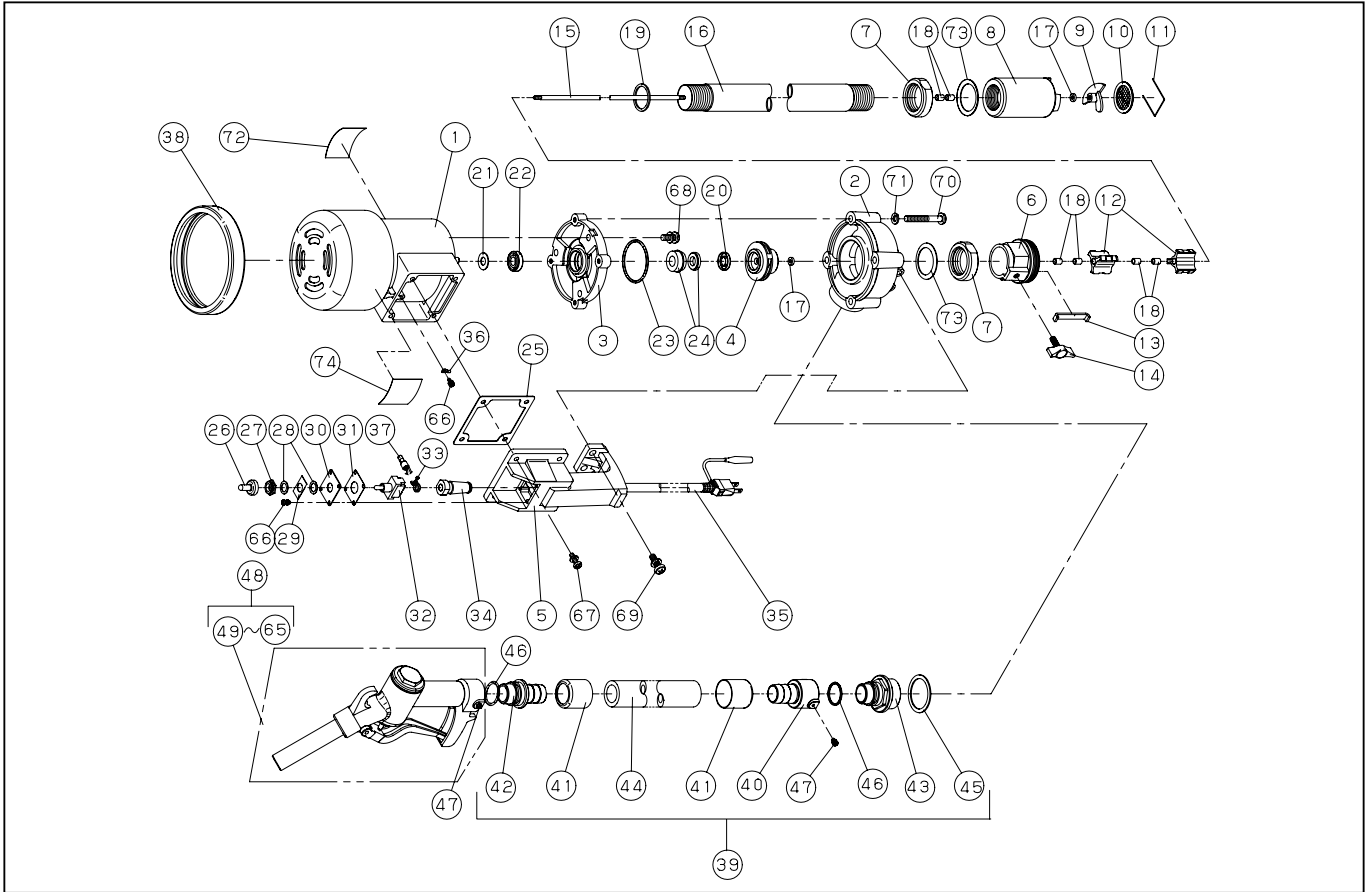


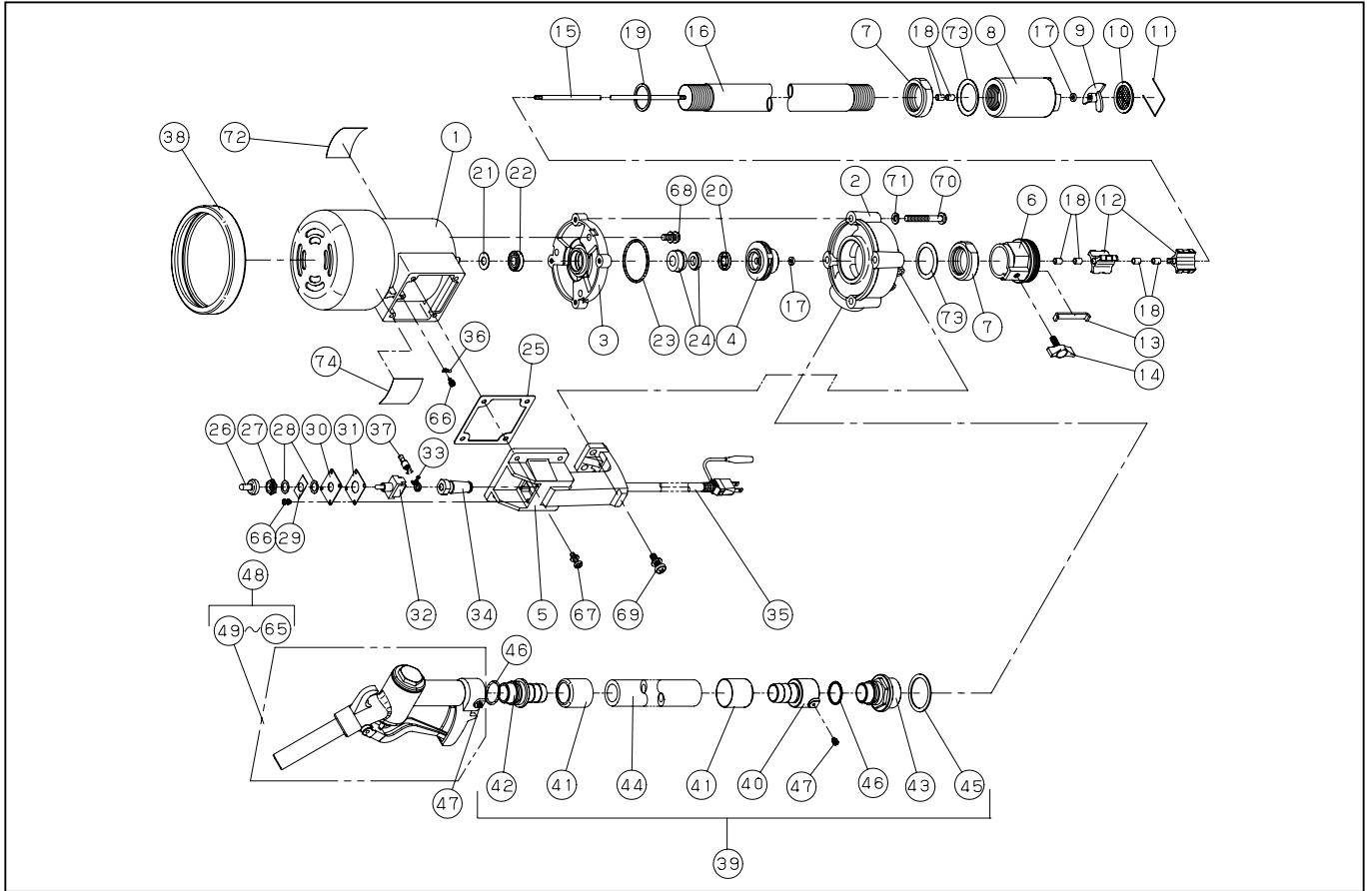
FR-200



DWG No.005851607 MODEL:FR-200 FORM:FR-200-BAB-0

No.	PARTS CODE	PARTS NAME	QTY	MATERIAL	SIZE	REMARKS
1	005006201	MOTOR	1	PAB-FA4 200W 240V		
2	005000102	PUMP CASING	1	AC		
3	005000202	END BRACKET	1	AC		
4	005000303	IMPELLER	1	AC		
5	005000404	HANDLE	1	AC		
6	005001001	DRUM ADAPTER	1	FC		
7	005001102	PIPE NUT	2	STB		
8	005001802	LOWER PUMP CASING	1	AC		
9	005002302	IMPELLER	1	BC-6		
10	005002101	FILTER	1	SPC		
11	005002401	FILTER STOPPER	1	SUS		
12	005001407	INTERMEDIATE BEARING	2	YBSC		
13	005001302	STOPPER	1	SPC		
14	001001505	WING BOLT	1	PC		
15	005001501	ROD	1	SUS 304		
16	005001602	SUCTION PIPE	1	ELECTRICAL WIRE PIPE		
17	004000502	THRUST METAL	2	BS		
18	004009901	BEARING METAL	6	MB0610DU	6X8X10	
19	005002002	CASING PACKING	1			
20	014050001	MECHANICAL PACKING	1			
21	014009502	PACKING GUM	1	NBR		
22	893755032	OIL SEAL	1	NBR	TC 12.28.7	
23	889955055	O-RING	1	NBR	G55	
24	005010201	MECHANICAL SEAL	1	EH-791 SF8K		
25	014007701	TERMINAL PACKING	1	NBR		
26	004002601	SWITCH GUM	1	NBR		
27	004002502	SWITCH NUT	1	BS6 WITH HEXAGON FLANGE		
28	004003602	SWITCH SEAL	2			
29	004010301	ON-OFF PLATE	1	WD1901		
30	004005401	SWITCH PLATE	1	SPC		

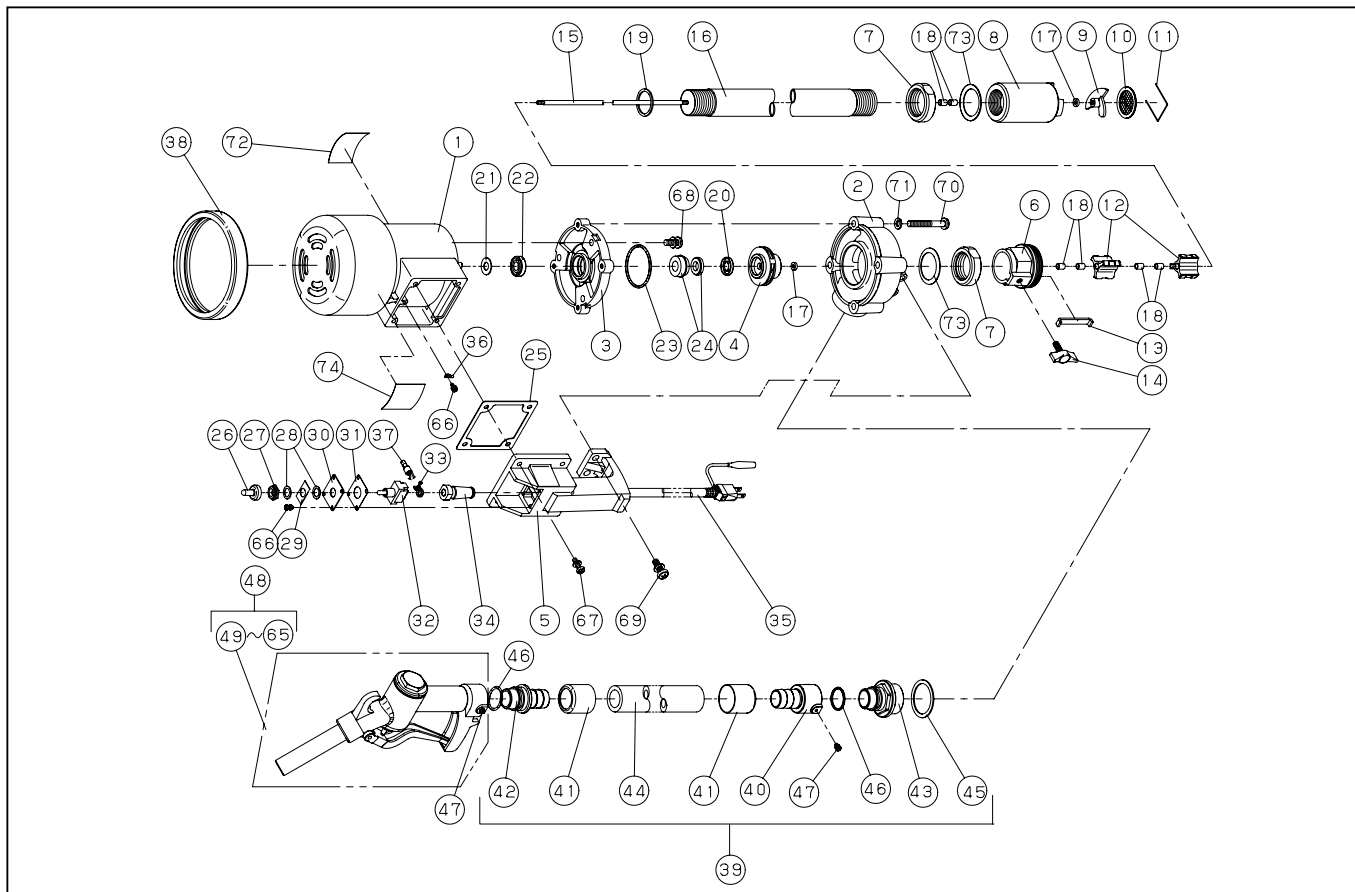
FR-200



DWG No.005851607 MODEL:FR-200 FORM:FR-200-BAB-0

No.	PARTS CODE	PARTS NAME	QTY	MATERIAL	SIZE	REMARKS
31	004005502	SWITCH PACKING	1			
32	004010202	SNAP SWITCH	1	WD1011 OR MJ4T-51CS		
33	940119010	HOSE BAND	1		φ 10	
34	004006501	CORD BUSH (AC)	1	NBR		
35	005006002	AC CORD	1	VCT	0.75SX5M	
36	944300009	TERMINAL	1		1.25-3.5	
37	944500002	SOLDERLESS CONNECTOR	1	CE-2		
38	005002201	CUSHION RUBBER	1	NBR		
39	005801003	HOSE ASSY	1			
40	015001402	STRAIGHT FLANGE	1	FC		
41	005004401	HOSE TUBE	2	ALP		
42	005003702	NOZZLE FLANGE	1	FC		
43	005004302	HEXAGON FLANGE	1	FC		
44	005005801	HOSE	1	GUM HOSE FOR OIL	φ 25	
45	005004502	FLANGE PACKING	1			
46	889855028	O-RING	2	NBR	P28	
47	707819036	+ SCREW	4	SWRM	M4X8	
48	008850103	NOZZLE ASSY	1			
49	008001804	OIL SUPPLY NOZZLE	1	AC		
50	008002801	VALVE	1	YBSC		
51	008003001	VALVE SEAT	1	BS		
52	008002301	SEAL BUSHING	1	BS		
53	008002401	NOZZLE LOT	1	SUS		
54	008001902	LEVER	1	AC		
55	008002601	CAP	1	AC		
56	008002501	NOZZLE PIPE	1	ELECTRICAL WIRE PIPE		
57	008002002	GUM	1	NBR		
58	008002701	CAP PACKING	1	NBR		
59	889855006	O-RING	1	NBR	P6	
60	712018081	SCREW	1	SWRM	M6X12	

FR-200



DWG No.005851607 MODEL:FR-200 FORM:FR-200-BAB-0

No.	PARTS CODE	PARTS NAME	QTY	MATERIAL	SIZE	REMARKS
61	849905228	WAVE SPRING PIN	1	SUS	5X22	
62	008000903	NOZZLE SPRING	1	SWP		
63	008003101	GUM	1	NBR		
64	008002101	GUIDE	1	BS		
65	008002902	VALVE	1	BS		
66	707819037	+ SCREW	5	SWRM	M4X10	
67	707819057	+ SCREW	4	SWRM	M6X20	
68	707819065	+ SCREW	3	SWRM	M8X20	
69	707819066	+ SCREW	2	SWRM	M8X25	
70	703319137	+ SCREW	4	SWRM	M8X60	
71	843822008	SPRING WASHER	4		φ 8	
72	004008203	LABEL	1	T FILM		
73	005001902	SPRING	2	SUP	φ 38	
74	004006402	CAUTION LABEL	1	VINYLON		
	005006601	OIL	1	MOBIL N03	50 CC	
	005005903	OPERATION MANUAL	1			
	005006401	PACKING CASE	1			