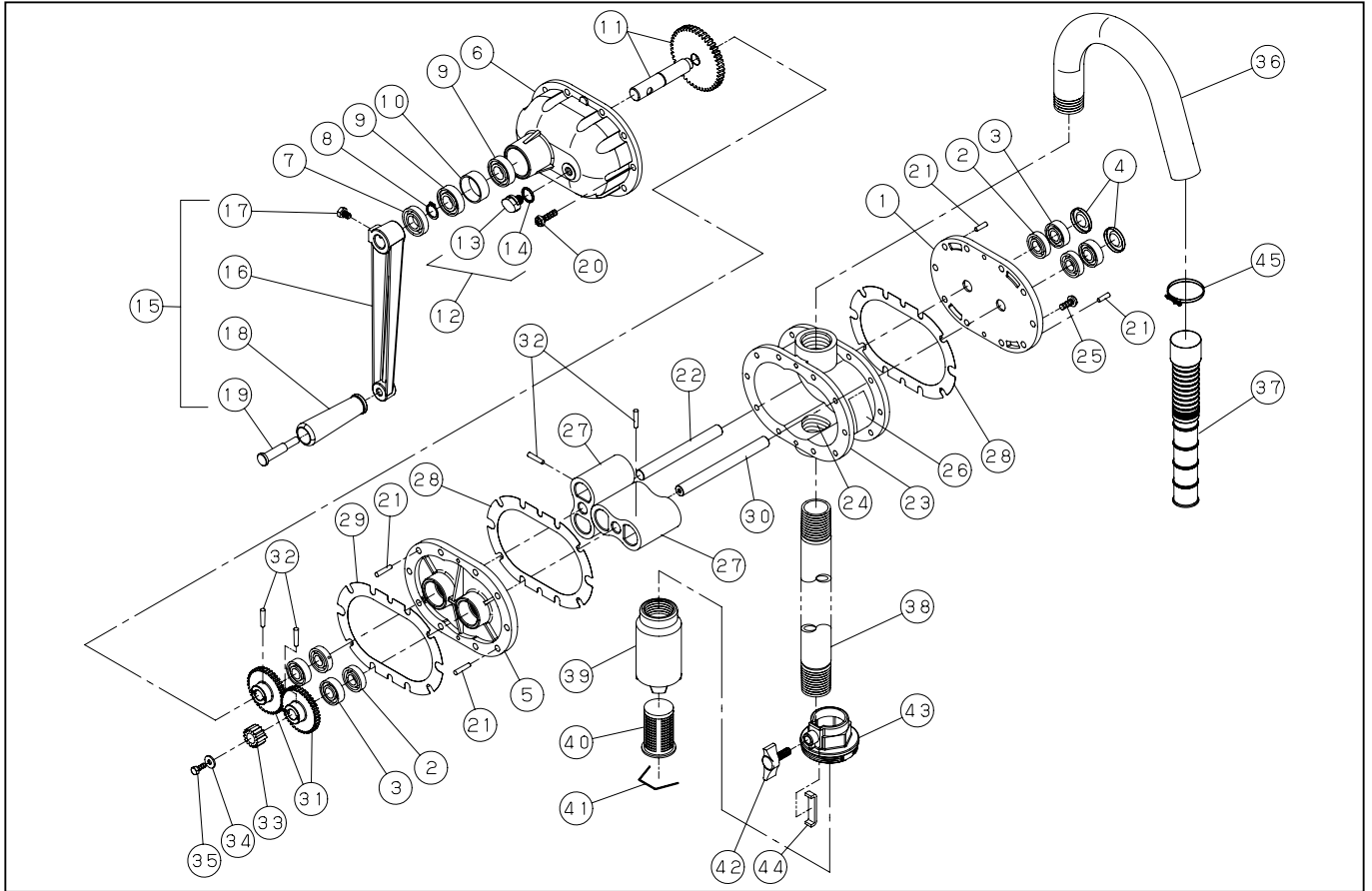


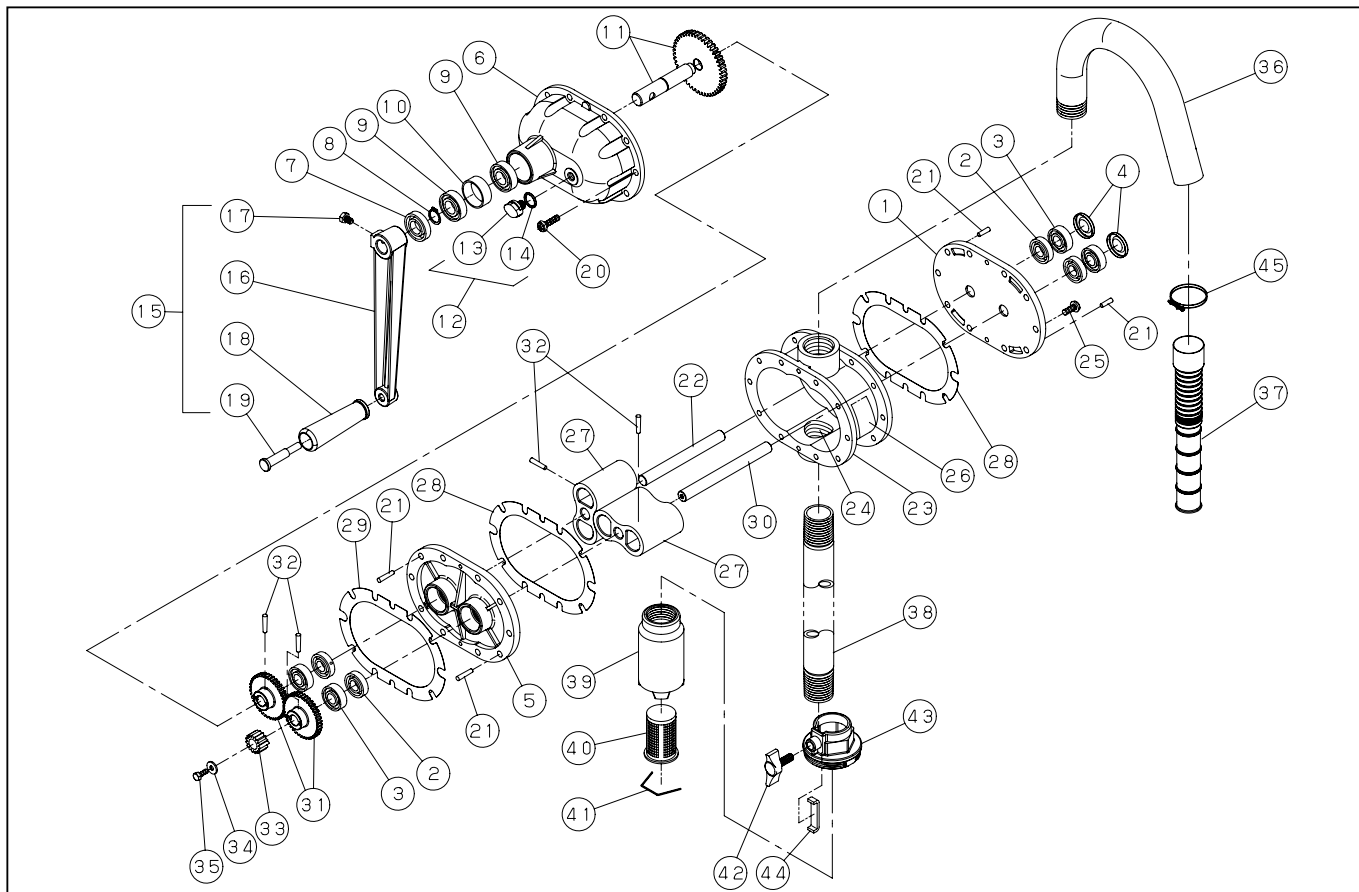
LP-32



DWG No.003850418 MODEL:LP-32 FORM:LP-32-BAA-5

No.	PARTS CODE	PARTS NAME	QTY	MATERIAL	SIZE	REMARKS
1	003010201	OUT COVER	1	ADC		
2	893755032	OIL SEAL	4	NBR	TC 12.28.7	
3	911406011	BEARING	4	6001		
4	003002105	BEARING CAP	2	SPGC		
5	003010101	INSIDE COVER	1	ADC		
6	003010301	GEAR COVER	1	ADC		
7	893555055	OIL SEAL	1	NBR	SC 15327	
8	888327015	STOP RING	1	15SK		
9	911406012	BEARING	2	6002		
10	003002302	BEARING COLLAR	1			
11	003800201	GEAR ASSY	1			
12	002805501	RHOMBIC BOLT SET	1			
13	002002102	BOLT	1	NYLON		
14	002020001	BOLT O-RING	1	NBR		
15	003800101	HANDLE ASSY	1			
16	003002006	HANDLE	1	ADC		
17	735719098	HEXAGON BOLT	1		M6X12	
18	001005504	HANDLE GRIP	1	NYLON		
19	001013901	HANDLE RIVET	1	SWRM		
20	003006201	+ SCREW	10		M6X22	
21	848609147	TAPER PIN	4		5X8	
22	003001001	ROOTS 2ND SHAFT	1	S35C		
23	003010401	HOUSING	1	ADC		
24	003007505	INSERT BUSHING	1			
25	003006301	+ SCREW	10		M6X15	
26	003003206	NAME PLATE	1	T FILM		
27	003000502	ROOTS	2	QUENCHED ALLOY IRON		
28	003004602	COVER PACKING	2		0.1T	
29	003006502	GEAR COVER PACKING	1		0.3T	
30	003000902	ROOTS MAIN SHAFT	1	S35C		

LP-32



DWG No.003850418 MODEL:LP-32 FORM:LP-32-BAA-5

No.	PARTS CODE	PARTS NAME	QTY	MATERIAL	SIZE	REMARKS
31	003000804	TIMING GEAR	2	QUENCHED ALLOY IRON		
32	847909064	TAPER PIN	4	S45C	4X22	
33	003000703	PINION GEAR	1	QUENCHED ALLOY IRON		
34	003006001	PINION GEAR WASHER	1	SPC 1.6T		
35	747919014	HEXAGON BOLT	1	SWRM	M15X12	
36	003001702	BEND	1	ELECTRICAL WIRE PIPE 311		
37	003004402	DELIVERY HOSE	1	PE		
38	003001601	SUCTION PIPE	1	ELECTRICAL WIRE PIPE 311		
39	003001205	FILTER BODY	1	FC-20		
40	003006101	STRAINER	1	VINYL		
41	003001304	FILTER STOPPER	1	SUS		
42	001001505	WING BOLT	1	PC		
43	001006506	LARGE SCREW	1	ADC		
44	001005001	STOPPER	1			
45	940019036	HOSE BAND	1		φ 36	
	003005905	OPERATION MANUAL	1			
	003005705	PACKING CASE	0.2			
	003009201	MACHINE OIL	1		ISO VG46	