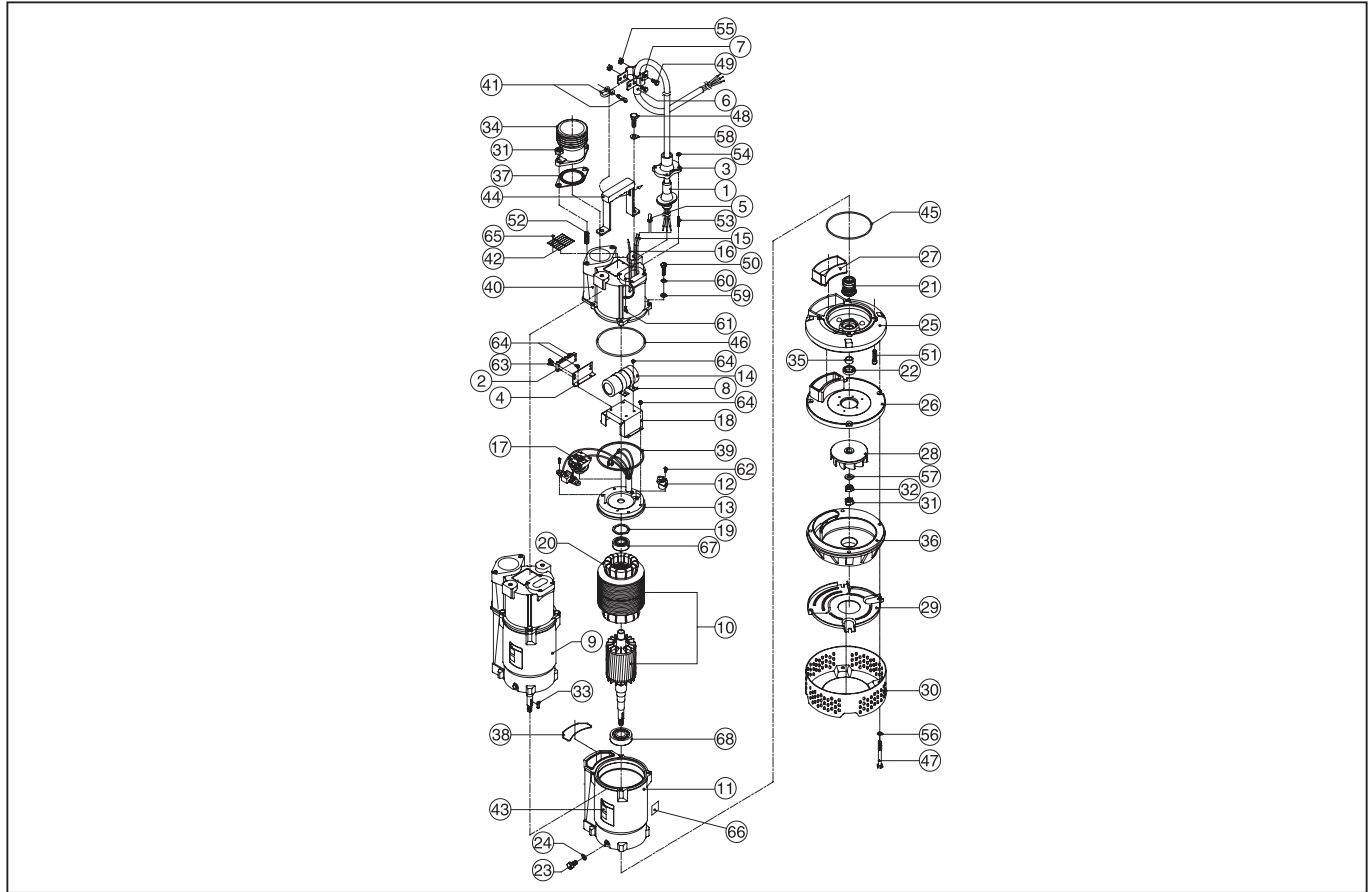


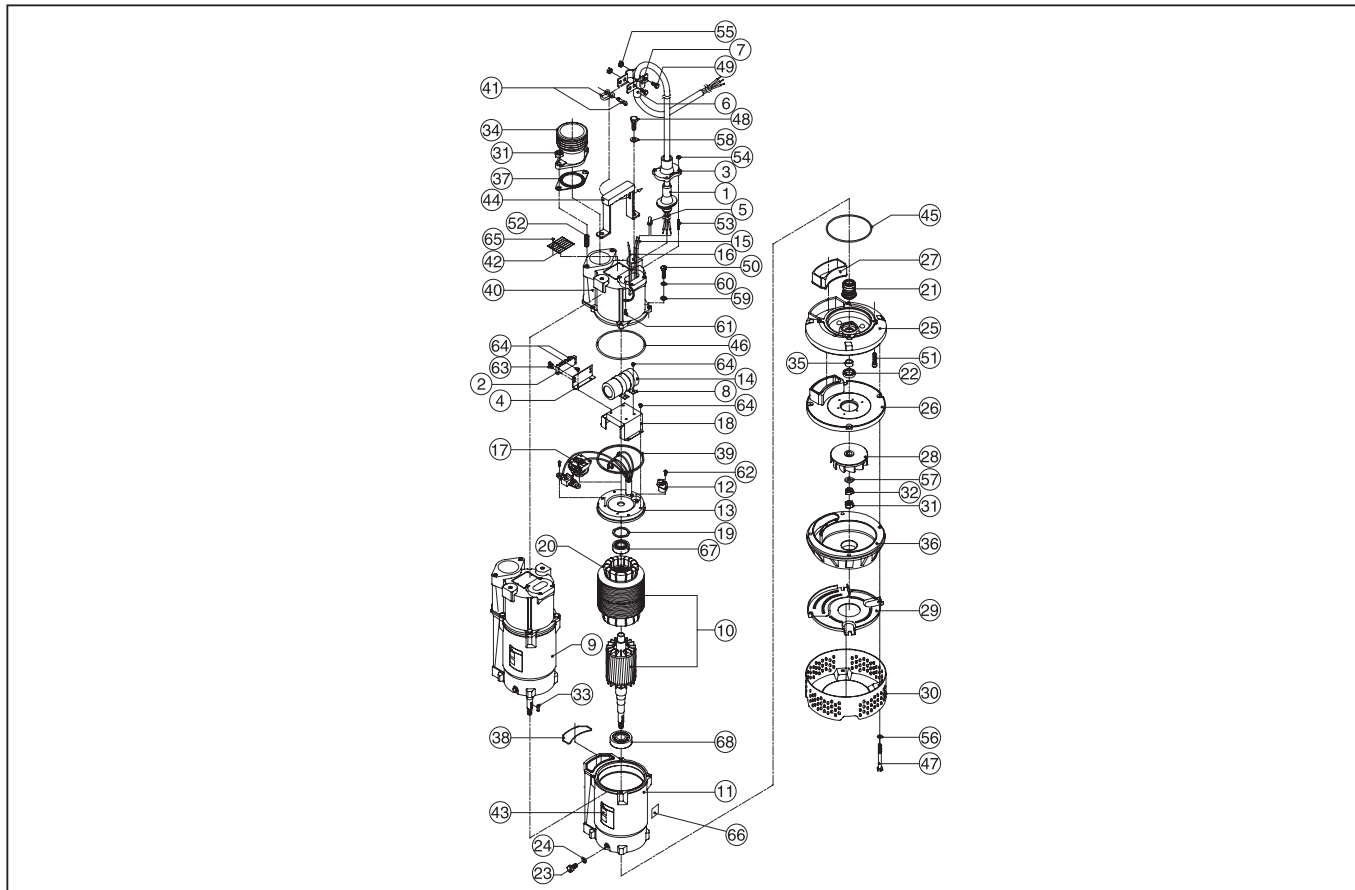
PB-68011



DWG No.043858402 MODEL:PB-68011 FORM:PB-68011-BAA

No.	PARTS CODE	PARTS NAME	QTY	MATERIAL	SIZE	REMARKS
1	043048801	Power Cord (PB-68011-BAA)	1	STW-A(AWG12) 12.2m(40ft)		
2	043048901	Terminal Board	1	—		
3	043049001	Cable Entry	1	Aluminium die casting		
4	043049101	Terminal Board Holder	1	Steel		
5	043049201	Connector	3	—		
6	043049301	Tube	1	Chloroprene rubber L=40		
7	043049401	Cable Band	2	Steel		
8	043049501	Band	2	Steel		
9	043814401	Motor Assy	1	1 φ 115V60Hz		
10	043814501	Rotor & Stator	1	Shaft : Stainless steel		
11	043049801	Stator Housing	1	Aluminium die casting		
12	043049901	Motor Protector	1	—		
13	043050001	Housing	1	Gray iron casting		
14	043050101	Capacitor (600 μ F 125VAC)	1	—		
15	043050201	Lead Wire	1	Gray Total : 6		
16	043050301	Earth Wire	1	Green/Yellow		
17	043050401	Centrifugal Switch	1	—		
18	043050501	Centrifugal Switch Cover	1	Steel		
19	043050601	Wave Washer	2	—		
20	043050701	Key	1	—		
21	043050801	Mechanical Seal	1	SiC/SiC φ 20		
22	043050901	Oil Seal	1	Acrylonitrile-butadien rubber		
23	043051001	Oil Plug	1	Stainless steel (M10 × 20)		
24	043051101	Seal Washer	1	—		
25	043051201	Mechanical Seal Housing	1	Aluminium die casting		
26	043051301	Rear Cover	1	Special synthetic rubber		
27	043051401	Discharge Cover	1	Special synthetic rubber		
28	043051501	Impeller	1	Graphite iron casting		
29	043051601	Suction Cover	1	Steel		
30	043051701	Strainer	1	Steel		

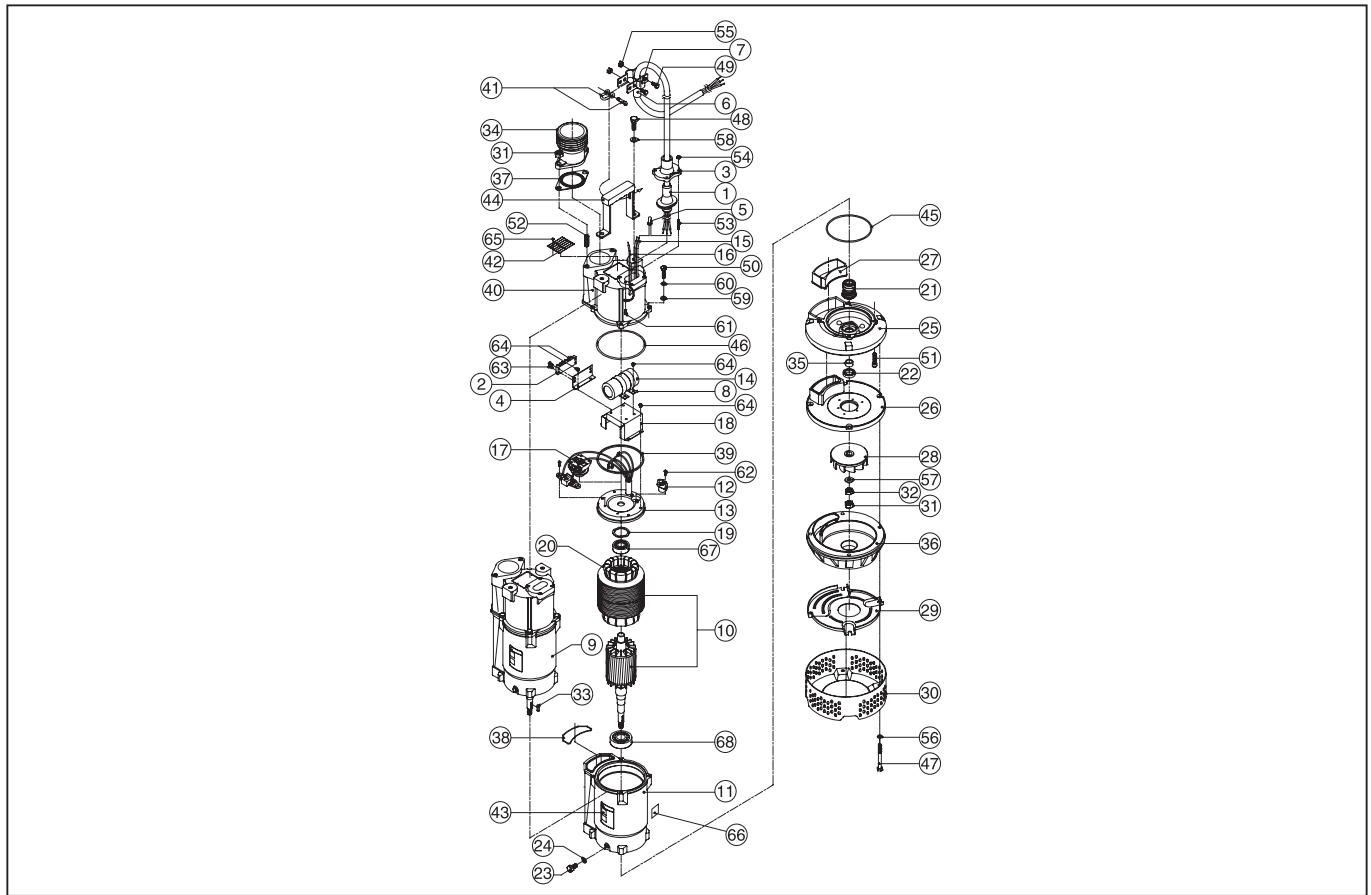
PB-68011



DWG No.043858402 MODEL:PB-68011 FORM:PB-68011-BAA

No.	PARTS CODE	PARTS NAME	QTY	MATERIAL	SIZE	REMARKS
31	043051801	Nut (M12)	3	Stainless steel		
32	043051901	Nut (M12)	1	Stainless steel		
33	043052001	Parallel Key	1	Stainless steel		
34	043052101	Hose Coupling	1	Gray iron casting 3"NPT		
35	043052201	Sleeve	1	Stainless steel		
36	043052301	Pump Casing	1	Special synthetic rubber		
37	043052401	Packing	1	Acrylonitrile-butadien rubber		
38	043052501	Packing	1	Acrylonitrile-butadien rubber		
39	043052601	Packing	1	Acrylonitrile-butadien rubber		
40	043052701	Motor Cover	1	Aluminium die casting		
41	043052801	Shackle	1	Steel structural		
42	043048701	PB-68011-BAA-0 Name Plate	1	Stainless steel		
43	043052901	Warning Label	1	—		
44	043053001	Handle	1	—		
45	043053101	O Ring (G125)	1	Acrylonitrile-butadien rubber		
46	043053201	O Ring (G140)	1	Acrylonitrile-butadien rubber		
47	043053301	Bolt (M8 × 80)	4	Stainless steel		
48	043053401	Bolt (M10 × 30)	2	Stainless steel		
49	043053501	Bolt (M8 × 16)	2	Stainless steel		
50	043053601	Bolt (M8 × 25)	4	Stainless steel		
51	043053701	Cap Screw (M8 × 30)	4	Stainless steel		
52	043053801	Stud Bolt (M12)	2	Steel		
53	043053901	Stud Bolt (M6)	4	Stainless steel		
54	043054001	Nut (M6)	4	Stainless steel		
55	043054101	Nut (M8)	2	Stainless steel		
56	043054201	Washer (M8)	4	Stainless steel		
57	043054301	Washer (M12)	1	Stainless steel		
58	043054401	Washer (M10)	2	Stainless steel		
59	043054501	Washer	4	Stainless steel		
60	043054601	Spring Washer	4	Stainless steel (M8)		

PB-68011



DWG No.043858402 MODEL:PB-68011 FORM:PB-68011-BAA

No.	PARTS CODE	PARTS NAME	QTY	MATERIAL	SIZE	REMARKS
61	043054701	+ screw (M4 × 8)	1	Steel		
62	043054801	+ screw (M4 × 10)	2	Steel		
63	043054901	+ screw (M4 × 12)	4	Steel		
64	043055001	+ screw (M4 × 6)	8	Steel		
65	043055101	Screw	2	Stainless steel		
66	043055201	Ponstar Label	1			
67	043049601	Ball Bearing (Upper)	1	AC6204ZZC3		
68	043049701	Ball Bearing (Lower)	1	6305ZZC3		