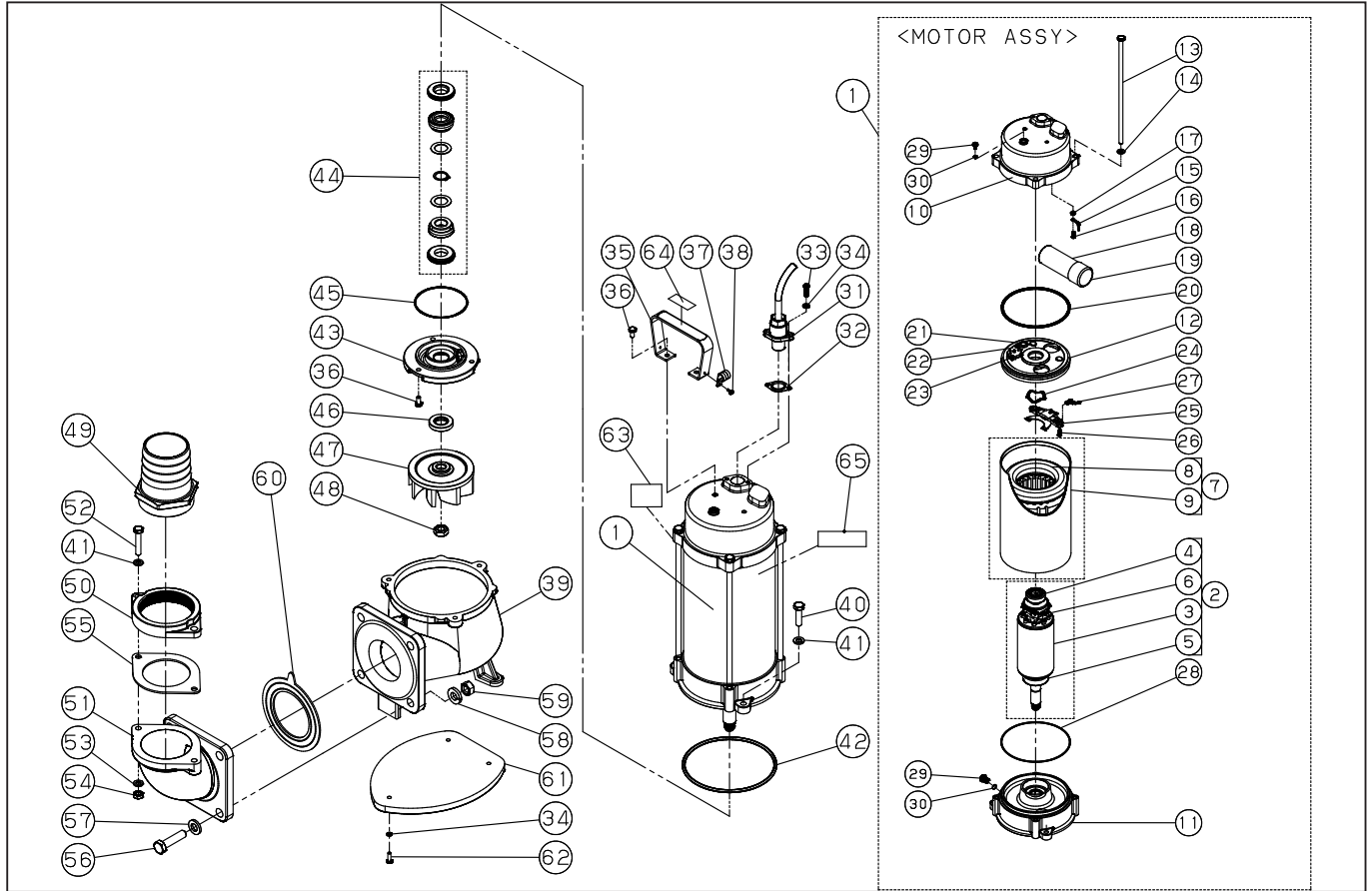


DWG No.077850901 MODELE : PKJ-1500 FORM : PKJ-1500-BAB-0

No.	PARTS CODE	PARTS NAME	QTY	MATERIAL/SIZE	REMARKS
1	0778029	MOTOR ASSY	1		
2	0778030	ROTOR ASSY	1		
3	0770212	ROTOR	1	SUS	
4	0770188	BEARING	1	6304LLB	
5	0770004	BEARING	1	6203LLB	
6	0770003	GOVERNOR SWITCH	1		
7	0778031	STATOR ASSY	1		
8	0770108	STATOR	1		
9	0770107	MOTOR CASING	1	SUS	
10	0770214	UPPER COVER	1	FC	
11	0770213	MOTOR BOTTOM COVER	1	FC	
12	0770013	MOTOR UPPER COVER	1	FC	
13	0770215	SCREW	4	M8*260	
14	0770090	WASHER	4	M8	
15	0770020	EARTH	1	155MM	
16	0770032	SCREW	1	M4*6	
17	0770033	WASHER	1	M4	
18	0770100	CAPACITOR	1	100UFD-400V	
19	0770023	SPACER	1	V0	
20	0770024	ORING	1	NBR	
21	0770022	GROMMET	1	NBR	
22	0770099	OVERLOAD PROTECTOR	1		
23	0770027	SCREW	2	M4*12	
24	0770011	WAVE WASHER	1	6203	
25	0770010	CENTRIFUGAL	1		
26	0770026	SCREW	2	M4*12	
27	0770018	FLEX	1	175MM	
28	0770021	ORING	1	NBR	
29	0770007	PLUG	2	M6*8	
30	0770008	ORING	2	NBR	

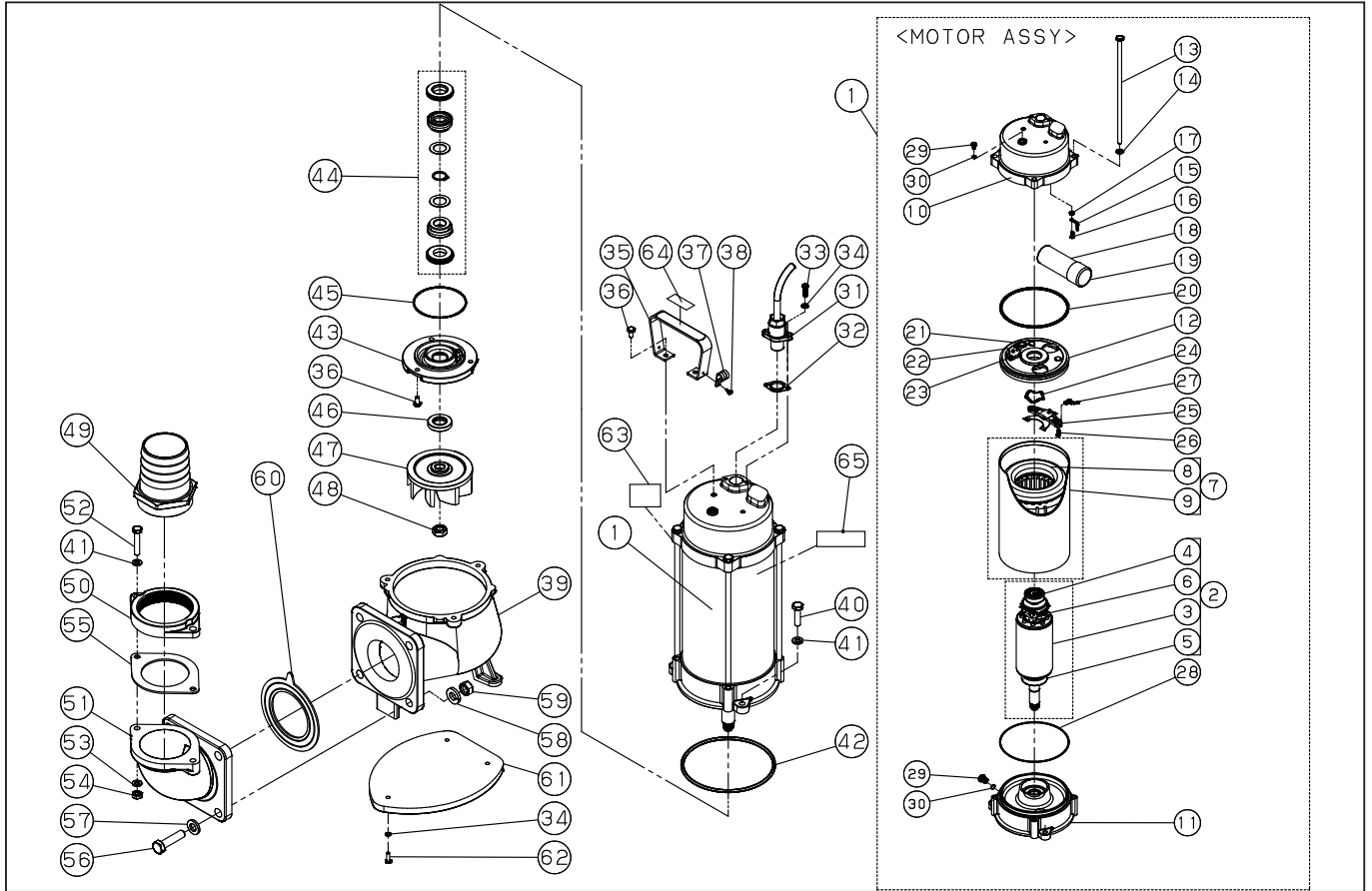
◆ Bare engine can not be supplied



DWG No.077850901 MODELE : PKJ-1500 FORM : PKJ-1500-BAB-0

No.	PARTS CODE	PARTS NAME	QTY	MATERIAL/SIZE	REMARKS
31	0778009	CABLE ASSY	1		
32	0770081	GASKET	1	SILICONE	
33	0770030	SCREW	2	M5*18	
34	0770031	WASHER	5	M5	
35	0770309	HANDLE	1	SUS	
36	0770025	SCREW	5	M6*12	
37	0770102	CABLE CLAMPS	1		
38	0770091	SCREW	1	M4*8	
39	0770218	PUMP HOUSING	1	FCD	
40	0770227	SCREW	3	M8*30	
41	0770090	WASHER	5	M8	
42	0770024	ORING	1	NBR	
43	0770219	COVER OF OIL CHAMBER	1	FC	
44	0778005	MECHANICAL SEAL ASSY	1	φ 20 C/C,S/C	
45	0770224	ORING	1	NBR	
46	0770220	LIP SEAL	1	NBR	
47	0770217	IMPELLER	1	FCD	
48	0770216	NUT	1	M20	
49	0770221	DISCHARGE OUTLET	1	3" PP	
50	0770223	FLANGE	1	3" PSFC	
51	0770222	ELBOW	1	3"FC	
52	0770232	SCREW	2	M8*45	
53	0770029	WASHER	2	M8	
54	0770095	NUT	2	M8	
55	0770226	GASKET	1	3" NBR	
56	0770228	SCREW	4	M12*55	
57	0770229	WASHER	4	M12	
58	0770231	WASHER	4	M12	
59	0770230	NUT	4	M12	
60	0770225	GASKET	1	3" NBR	

◆ Bare engine can not be supplied



DWG No.077850901 MODELE : PKJ-1500 FORM : PKJ-1500-BAB-0

No.	PARTS CODE	PARTS NAME	QTY	MATERIAL/SIZE	REMARKS
61	0770166	BOTTOM PLATE	1	FC	
62	0770176	SCREW	3	M5*18	
63	0770288	PKJ-1500 NAME PLATE LABEL	1	PET	
64	0770306	CAUTION LABEL	1	POLYESTER	
65	0770304	LOGO LABEL	1	PET	
	0770065	PKJ-1500 PACKING CASE	1		
	0778061	MANUAL ASSY	1		
	0770053	MANUAL	1		
	0770056	PKJ SPECIFICATION	1		
	0770054	DECLARATION	1		
	0770307	OIL	0.260	SHELL VITREA OIL ISOVG32 1000CC	

◆ Bare engine can not be supplied